

## Locations

*Serving ages 5-21 years old*

### **School-Based Health Centers**

#### **Open Year-round**

#### **Springfield Middle School**

**269-441-1295**

1023 Avenue A  
Battle Creek, MI 49037

#### **Lakeview High School**

**269-565-3704**

15060 Helmer Road South  
Battle Creek, MI 49015

#### **Battle Creek Central High School**

**269-965-9539**

100 West Van Buren Street  
Battle Creek, MI 49017

### **School Wellness Programs:**

#### **Northwestern Middle School**

**269-965-9662**

176 Limit Street  
Battle Creek, MI 49037

#### **W.K. Preparatory High School**

**269-965-9676**

60 West Van Buren Street  
Battle Creek, MI 49017

### **Behavioral Health only:**

#### **Pennfield Schools**

##### **Dunlap Elementary**

**269-961-9789**

8465 Pennfield Road  
Battle Creek, MI 49017

##### **Purdy Elementary**

**269-961-9795**

6510 Purdy Drive  
Battle Creek, MI 49017

##### **North Pennfield Elementary**

**269-961-9797**

7422 Poorman Road  
Battle Creek, MI 49017

#### **Homer Schools**

##### **Lillian Fletcher Elementary**

**517-568-4452**

403 South Hillsdale Street  
Homer, MI 49245

##### **Verona Elementary**

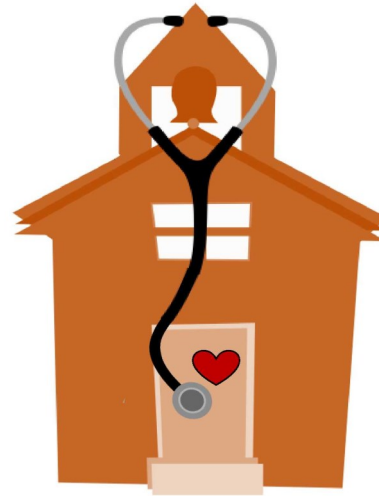
**269-441-9736**

825 Capital Avenue NE  
Battle Creek, MI 49017

**Visit the Grace Health website for hours:  
[www.gracehealthmi.org](http://www.gracehealthmi.org)**

Your Partner for

## Student Success



Grace Health  
181 West Emmett Street  
Battle Creek, MI 49037  
269-965-8866  
[www.gracehealthmi.org](http://www.gracehealthmi.org)

R:\handouts\Student Health Centers\SBHC Brochure 9.06.19

grace  
HEALTH

# Student Health Centers

**Be Well.  
Do Well.**

## School-Based Services

**Grace Health Student Health Center offers quality healthcare for your child's physical and mental health needs in a friendly setting at a time that is convenient for the student and family.**

### School-Based Health Centers (SBHC)

Grace Health SBHCs are staffed with a medical provider, behavioral health provider and support staff.

The Health Center's medical provider can be your child's regular provider OR can support your child's regular provider/pediatrician.

Services include routine well-child exams with immunizations, school and sports physicals, preventative care, urgent care and behavioral/mental health services.

### School Wellness Program

Grace Health School Wellness Programs are staffed with a nurse and behavioral health provider.

Services provided include limited clinical nursing services, mental health services, and health education.

### Behavioral Health

Behavioral Health helps you manage your personal challenges, big or small, and guides you to healthy, productive solutions. Behavioral Health services include assessment, guidance and treatment when you are experiencing stress and other problems affecting the quality of your emotional and mental health.

## Receiving Care

Most services require parental / guardian consent. Your student may come to the Student Health Center anytime during regular hours or an appointment can be made by calling the Health Center direct.

## Confidential Services

Under Michigan law a minor may seek their own health care for confidential services. The following confidential services are provided at the Student Health Center:

- Sexually transmitted infection testing and treatment
- Pregnancy testing
- Behavioral health services

Parental / guardian consent is not required for the confidential services listed above.

## Insurance / Payment

Grace Health will see all students regardless of their ability to pay. Medicaid and most commercial insurances are accepted. If you have insurance, we will directly bill your insurance company. If you need assistance with Medicaid enrollment, our staff is here to help. Grace Health also has a sliding fee scale available that is based on income and family-size. For billing questions or concerns, call (269) 441-3456.

## Privacy Practices

Please visit the Grace Health website at [www.gracehealthmi.org/privacy-practices/](http://www.gracehealthmi.org/privacy-practices/) for a copy of the Privacy Practices information or ask the Health Center staff for a copy. Please review this information carefully.

## About Grace Health

181 W. Emmett St.  
Battle Creek, MI 49037  
269-965-8866

Grace Health is committed to you, treating your health care needs and getting you on a path to better health. We want to be your medical home. What that means to you is that we will work with you and will always respect your preferences. We will provide you with the education and support you need to make the best decisions and to participate in your own care.

### Services Offered at Grace Health

- Behavioral Health
- Dental
- Family Practice
- Health Education
- Internal Medicine
- OB/GYN
- Optometry / Vision Care
- Pediatrics
- Pharmacy
- Physical Therapy
- Podiatry

### Mission Statement

To provide patient-centered healthcare with excellence in quality, service, and access.

### Vision Statement

A community in which all people achieve their full potential for health and well-being across the lifespan. We work to be trusted by patients, a valued partner in the community, and creators of positive change.