

Locations

School-Based Health Centers

Open Year-round

Springfield Middle School

269-441-1295

1023 Avenue A
Battle Creek, MI 49037

Lakeview High School

269-565-3704

15060 Helmer Road South
Battle Creek, MI 49015

Battle Creek Central High School

269-965-9539

100 West Van Buren Street
Battle Creek, MI 49017

School Wellness Programs:

Northwestern Middle School

269-965-9662

176 Limit Street
Battle Creek, MI 49037

W.K. Preparatory High School

269-965-9676

60 West Van Buren Street
Battle Creek, MI 49017

Behavioral Health only:

Pennfield Schools

Dunlap Elementary

269-961-9789

8465 Pennfield Road
Battle Creek, MI 49017

Purdy Elementary

269-961-9795

6510 Purdy Drive
Battle Creek, MI 49017

North Pennfield Elementary

269-961-9797

7422 Poorman Road
Battle Creek, MI 49017

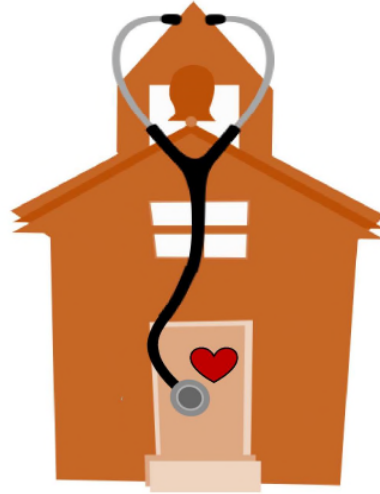
Homer Schools

Lillian Fletcher Elementary

517-568-4452

Your Partner for

Student Success



Grace Health
181 West Emmett Street
Battle Creek, MI 49037
269-965-8866
www.gracehealthmi.org

R:\handouts\Student Health Centers\SBHC Brochure 9.06.19

grace
HEALTH

Student Health Centers

**Be Well.
Do Well.**

School-Based Services

Grace Health Student Health Center offers quality healthcare for your child's physical and mental health needs in a friendly setting at a time that is convenient for the student and family.

School-Based Health Centers (SBHC)

Grace Health SBHCs are staffed with a nurse practitioner, social worker and support staff.

The Health Center's nurse practitioner can be your child's regular provider OR can support your child's regular provider/pediatrician.

Services include routine well-child exams with immunizations, school and sports physicals, preventative care, urgent care and behavioral/mental health services.

School Wellness Program

Grace Health School Wellness Programs are staffed with a nurse and social worker.

Services provided include limited clinical nursing services, mental health services, and health education.

Behavioral Health

Behavioral Health helps you manage your personal challenges, big or small, and guides you to healthy, productive solutions. Behavioral Health services include assessment, guidance and treatment when you are experiencing stress and other problems affecting the quality of your emotional and mental health.

Receiving Care

Most services require parental / guardian consent. Your student may come to the Student Health Center anytime during regular hours or an appointment can be made by calling the Health Center direct.

Confidential Services

Under Michigan law a minor may seek their own health care for confidential services. The following confidential services are provided at the Student Health Center:

- Sexually transmitted infection testing and treatment
- Pregnancy testing
- Behavioral health services

Parental / guardian consent is not required for the confidential services listed above.

Insurance / Payment

Grace Health accepts Medicaid and most insurance plans. If you have insurance, we will directly bill your insurance company. You will be responsible for co-pays and unmet deductible amounts. Grace Health has a sliding fee scale that is based on income and family size. For discount and billing inquiries, call 269-441-3456.

Privacy Practices

Please visit the Grace Health website at www.gracehealthmi.org/privacy-practices/ for a copy of the Privacy Practices information or ask the Health Center staff for a copy. Please review this information carefully.

About Grace Health

181 W. Emmett St.
Battle Creek, MI 49037
269-965-8866

Grace Health is committed to you, treating your health care needs and getting you on a path to better health. We want to be your medical home. What that means to you is that we will work with you and will always respect your preferences. We will provide you with the education and support you need to make the best decisions and to participate in your own care.

Services Offered at Grace Health

- Behavioral Health
- Dental
- Family Practice
- Health Education
- Internal Medicine
- OB/GYN
- Optometry / Vision Care
- Pediatrics
- Pharmacy
- Physical Therapy
- Podiatry

Mission Statement

To provide patient-centered healthcare with excellence in quality, service, and access.

Vision Statement

A community in which all people achieve their full potential for health and well-being across the lifespan. We work to be trusted by patients, a valued partner in the community, and creators of positive change.